

RAVA3PRO

RAVA3Pro project pilot: 4D scheduling in Perhelä -area in Järvenpää, Finland

Mr. Jouni Vastamäki, City of Järvenpää
and Ms. Anna-Riitta Kallinen, ARKCON, RAVA3Pro Project Manager
<https://kirahub.org/en/rava3pro-en/>

R A V A 3
P R O

RAVA3Pro Municipalities:



R A V A 3
P R O



Collaborating:



MINISTRY OF FINANCE
FINLAND



Ympäristöministeriö
Miljöministeriet
Ministry of the Environment

KUNTA
LIITTO

Association
of Finnish
Municipalities



Finnish
Environment
Institute



THE NATIONAL ARCHIVES
OF FINLAND



SENAATTI

R A V A 3 O R P
P R O 3 A V A R R
R A V A 3 O R P
P R O 3 A V A R R
R A V A 3 O R P
P R O 3 A V A R R
R A V A 3 O R P
P R O 3 A V A R R
R A V A 3 O R P
P R O 3 A V A R R

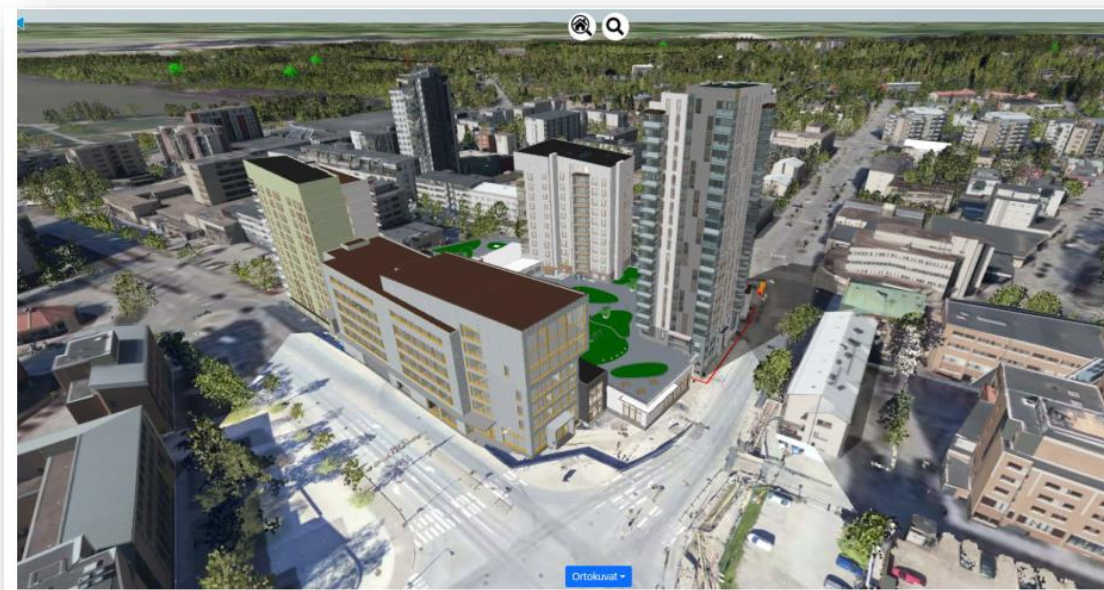
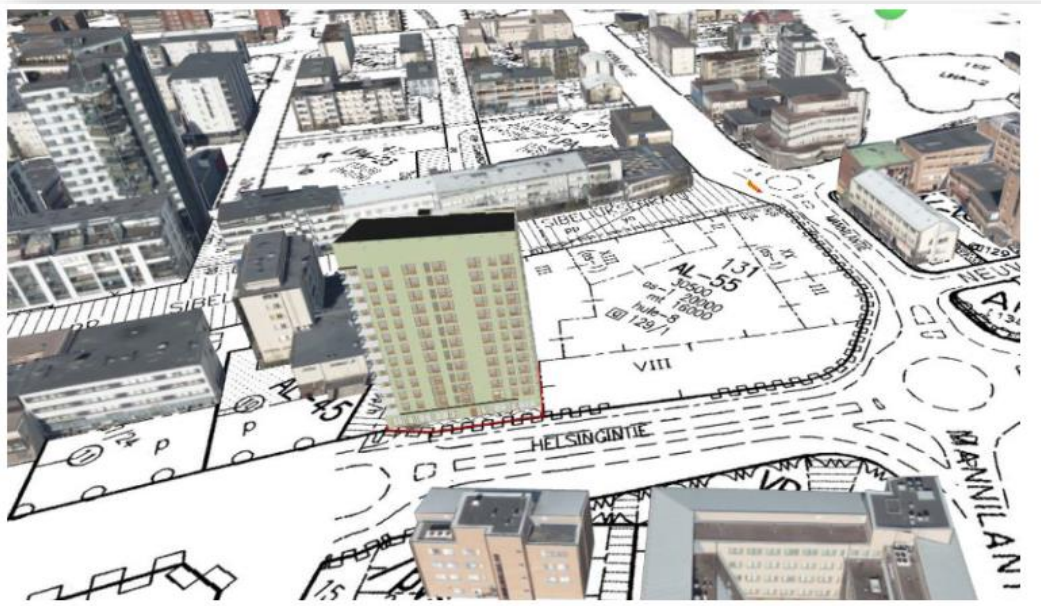
Main Goals:

- Checking of BIM-based building permit against regulations is automated
- Cloud-based information exchange and communication platform that is connected to RYTJ (*RYTJ= National built environment information system*)
- The fully automated data exchange to other government systems
- National Requirements of IFC-files (propertyset) and Use Cases
- National IFC Checking rules for BIM-based building permit
- The goal of municipalities is also to increase their BIM-maturity level and be a strong partner to National development of BIM-Based process

From 2D material to 4D IFC and citymodel

R A V A 3
P R O

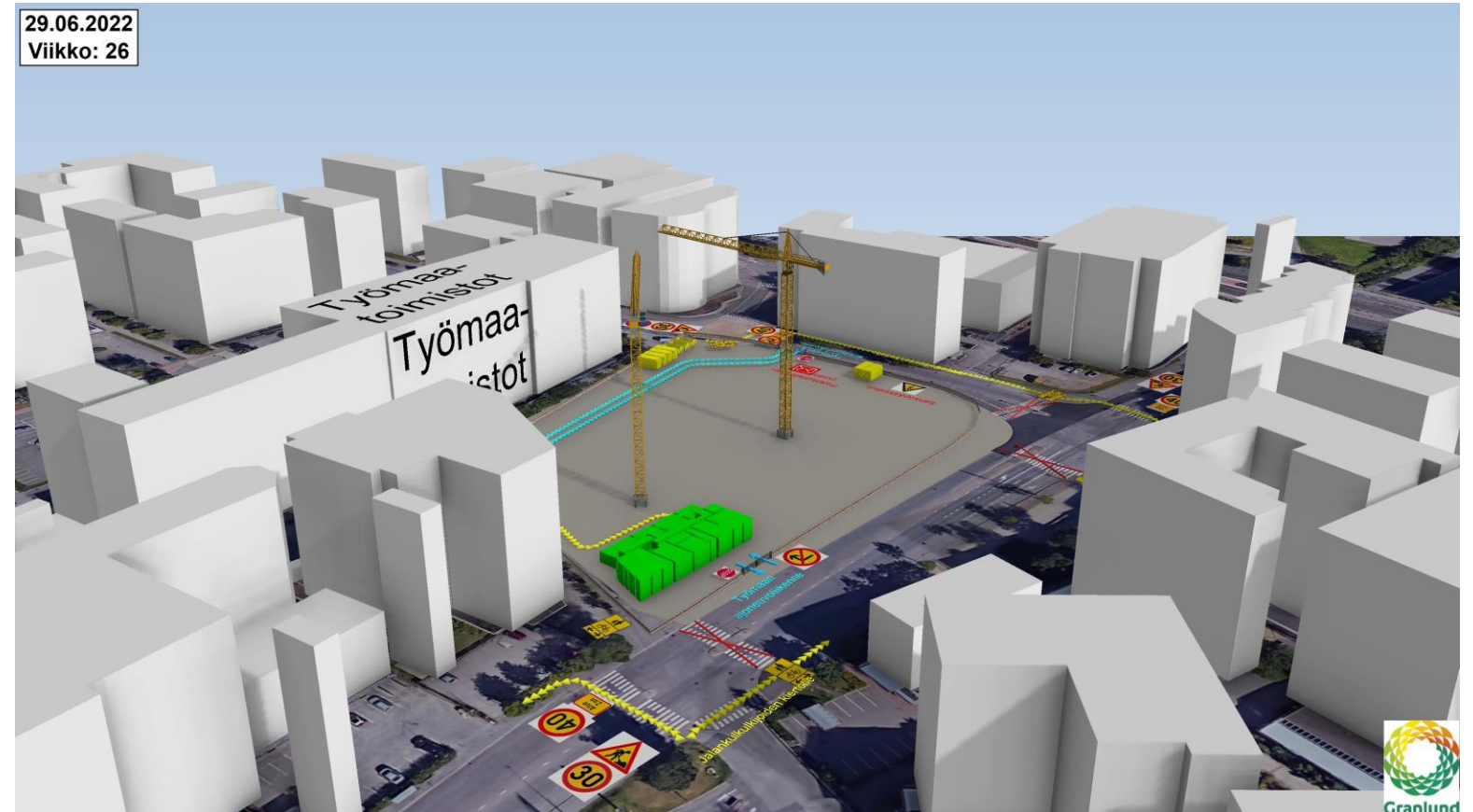
Perhelä area 4D Pilot collaboration software's and services companies:



Building Control 4D

R A V A 3
P R O

- A 4D schedule created for building control, which includes for example the construction plan, requirements for the fire department, access routes inside and outside the buildings, as well as evacuation routes during and after construction.
- The schedule can effectively communicate to the user the impact of construction on the environment and its timeline.

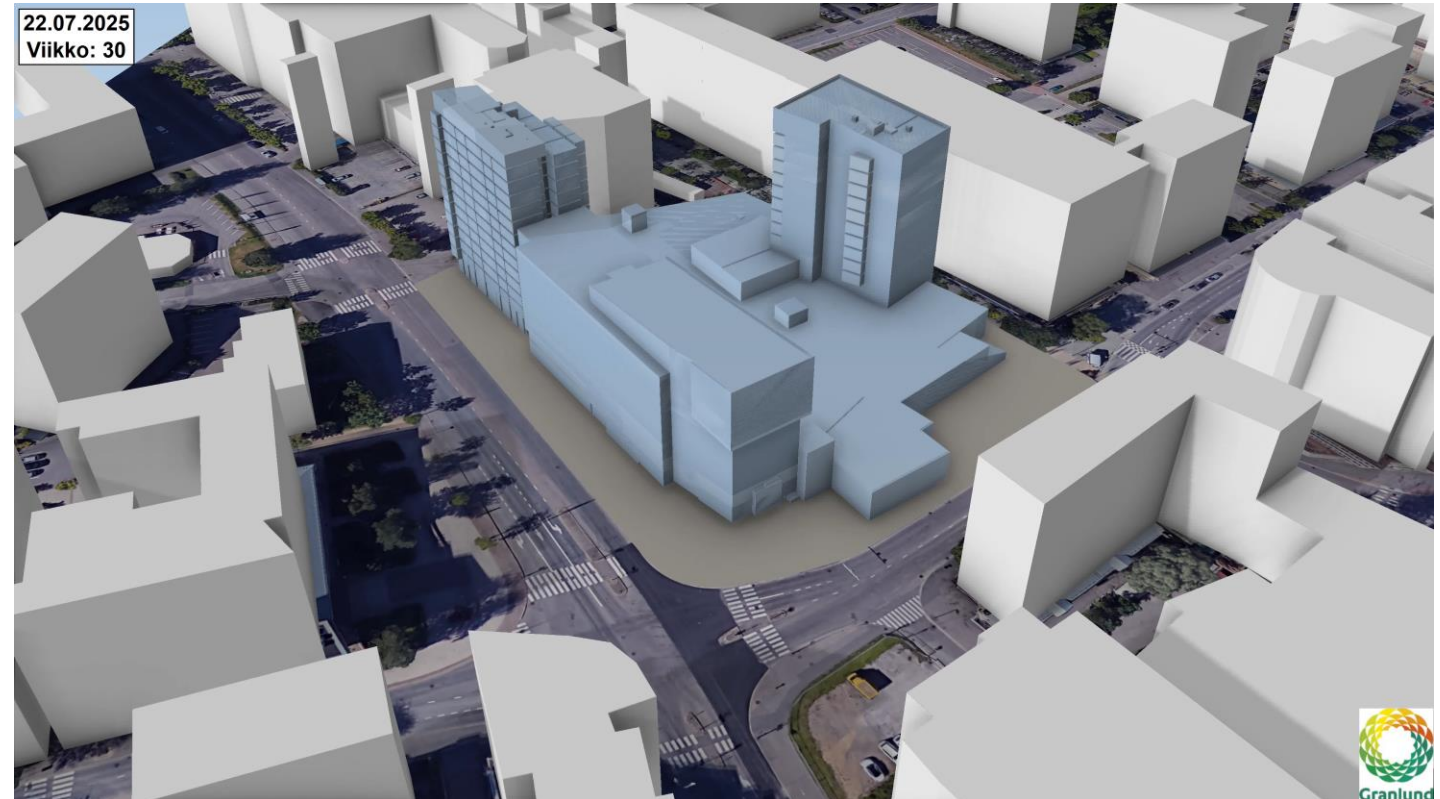


<https://vimeo.com/861933003/fa8eea80b4?share=copy>

Building Control and Rescue department 4D

R A V A 3
P R O

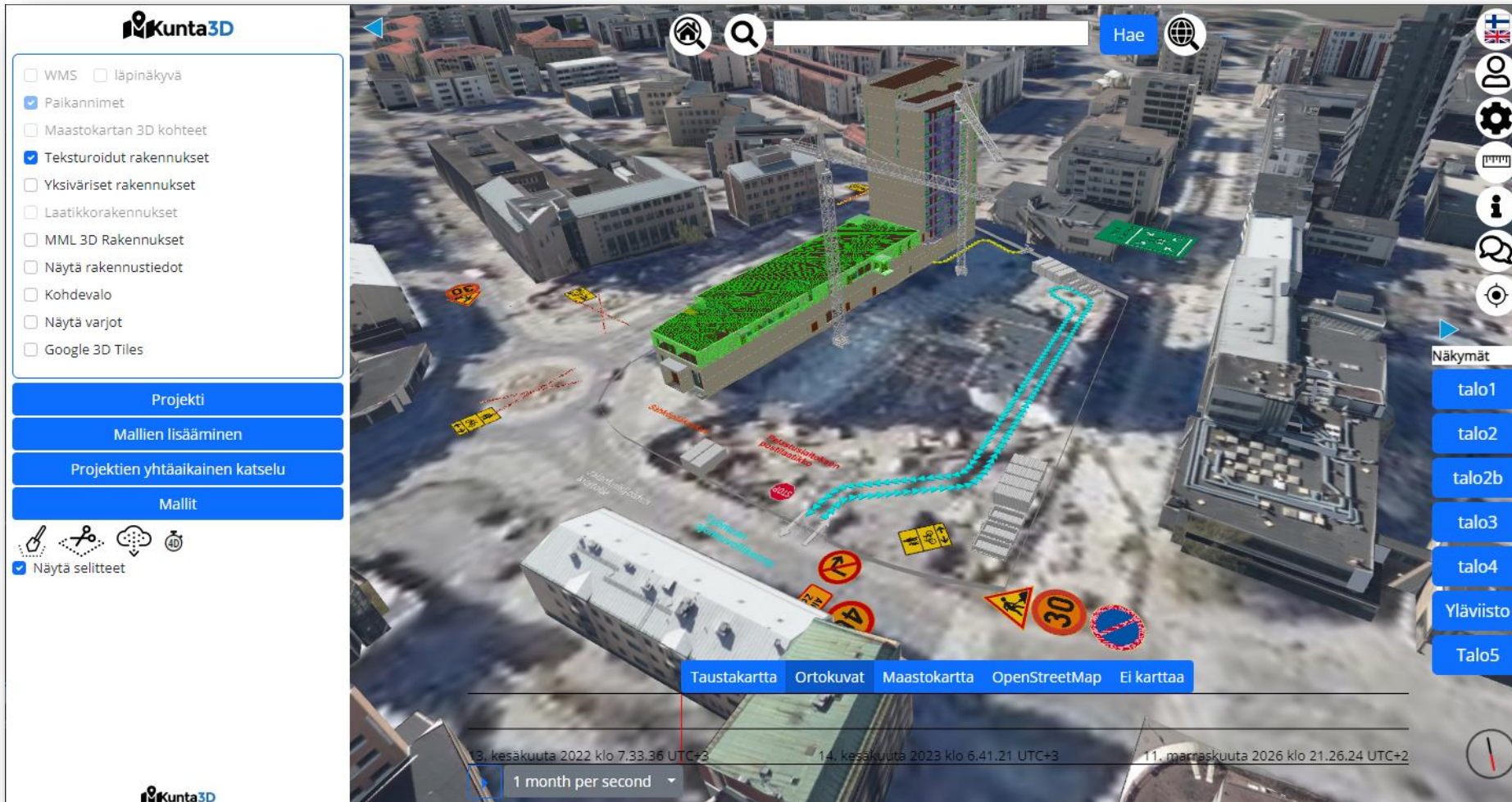
- Visualizing the construction site plan during construction, including any street rental arrangements, traffic arrangements, etc.
- Utilizing the building and site model in the user and maintenance manual
- Visual examination of evacuation routes as part of the workplace safety plan
- Illustrating upcoming zoning plans based on a timeline
- Presenting access routes from the city model to the building and within the building itself
- Representing key functions for the fire department in the building model (e.g., electrical main distribution panel and HVAC emergency shutdown)



<https://vimeo.com/861932926/5482e91ca8?share=copy>

4D in citymodel

R A V A 3
P R O



RAVA3PRO TEAM



Anna-Riitta Kallinen

Project Manager

+358 40770977

anna-riitta.kallinen@arkcon.fi



Suvi Välimäki

Project Coordinator

suvi.valimaki@hel.fi



Aarno Alanko

RAVA3Pro Chair of Board
Head of Unit, City of Helsinki,
Urban Environment Division

+358 40 668 5685

aarno.alanko@hel.fi

R A V A 3

P R O